

PwC's Global Employment Taxes Portal

Access global tax information – in one place!

With PwC's Global Employment Taxes Portal, employment tax information and support can now be accessed globally, in one place.

Introducing PwC's Global Employment Taxes Portal. This first-of-its-kind subscription service, available to companies globally, will provide:

- A birds-eye view of all the employment tax information you'll ever need in one place.
- The current employment tax landscape in each country, updated live.
- A calendar of employment tax deadlines and public holidays affecting payment dates proactively sent to you each month.
- News alerts and updates about global employment taxes that may impact your compliance.
- Information on the complexity of a country's tax system.

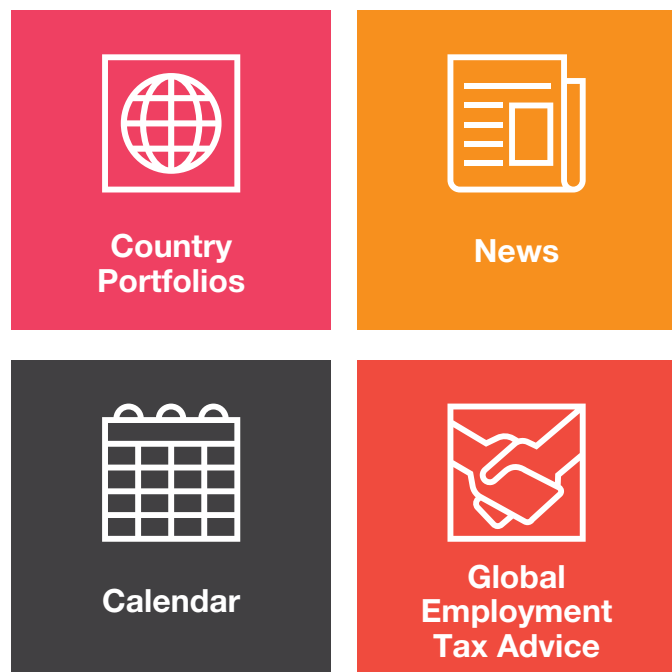
Brought together for the first time, these features will support you as a global employer, allowing you to proactively manage employment tax across your business. The portal provides a bridge between publicly available corporate tax information and information for individuals.

An unlimited number of subscribers per company allows your team to access the portal regardless of whether located together, in other countries or across shared service centres.

www.pwc.com



The four main elements of the Global Employment Taxes Portal are:



Country Portfolios

The employment tax information contained within the portal is segmented by country. For example, in Australia, the portal covers information about fringe benefits, payroll tax, and paying people. It also covers information about current tax issues such as contractor versus employee obligations, social security and pension rates, filing deadlines, and compulsory employee communications.

Within each country, you will also find links to the relevant revenue authorities in that country as well as other employment related sites.

Each country has been rated according to the 2020 World Bank and PwC report, Paying Taxes (<https://www.pwc.com/gx/en/services/tax/publications/paying-taxes-2020.html>). This is designed to assist companies to research the tax landscape in new locations for which they may not be familiar with.

Within each country portfolio, subscribers can also ask PwC for advice (see further under Global Employment Tax Advice).



News

Keeping up to date on changes across tax jurisdictions is becoming increasingly difficult as the change speeds up – just see our Quarterly Global Employment Taxes newsletters (<https://www.pwc.ie/publications/2020/global-employment-taxes-newsletter-october.pdf>).

The portal includes country alerts which will be issued to your inbox when a relevant employment tax announcement is made in a country. The alert will advise of the change, the date it's effective from, give you some technical detail and the 'so what' factor for you to know what this change could mean for your business. Subscribers will also receive an email with a link to the news item in the portal.

As soon as the tax change comes into effect, the information contained in the country portfolios will be updated, so you can be confident that you are accessing the most current information, as it happens.



Calendar

Keeping track of dates is hard, especially if you are not based in that country. That's why our proactive calendar feature will list important dates for each employment tax category, covered in each country portfolio. For example, in France, the tax year ends on 31 December for individuals and companies, but in New Zealand it is 31 March. There are also different dates relevant to employer salary reporting and remittances of tax. This is further complicated in situations where taxes are due on a public holiday – knowing these dates in advance can mean avoiding large penalties.

On the 20th of each month, subscribers will receive an email listing upcoming tax deadlines and public holidays for all the countries they are subscribed to in the next calendar month. For example, on the 20 October, subscribers will receive an email advising of dates occurring in November.

Future updates to the portal will include a downloadable calendar with check boxes next to each date so that you and your teams can 'tick off' tasks as they happen, and tailored calendar alerts so individuals can customise the countries they get information about or fixed dates for relevant taxes.



Global Employment Tax Advice

A subscriber logged on the portal can even seek advice from PwC. A form will appear pre-populated with the subscriber's details to make things easier.

The subscriber can request general advice, or tailor their request to certain countries or jurisdictions. The query box is deliberately small as issues can be complex, so we require just enough information from you to get started. An email will be sent to the PwC team with oversight of each country, copying the subscriber and client manager. The PwC team will then reach out to discuss your request, co-develop what is needed, deadlines and deliverables. Any fees will be discussed at that time.

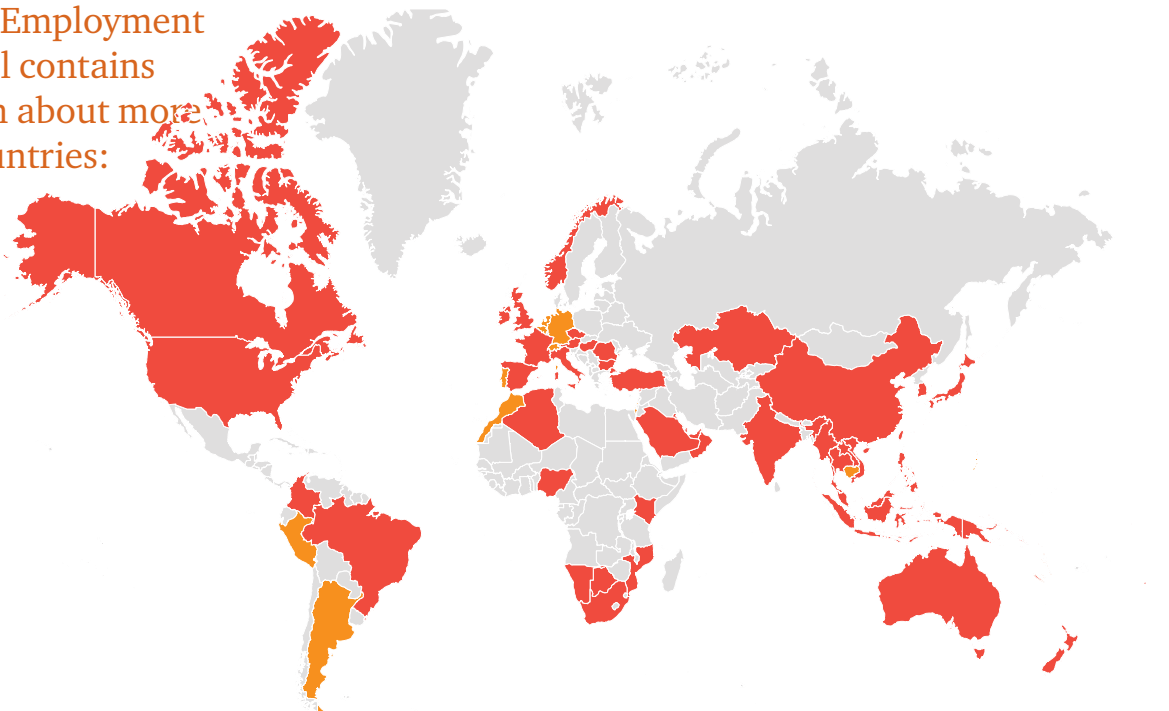


Feedback

In an effort to continually build and improve our platform, we want to hear from you! You can provide feedback in real time via the platform and also tell us which countries you would like to see added in future versions.



The Global Employment Taxes Portal contains information about more than 50 countries:



Active

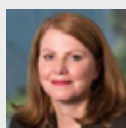
Algeria	French Polynesia	Myanmar
American Samoa	Hong Kong	Namibia
Australia	Hungary	New Caledonia
Austria	India	New Zealand
Botswana	Indonesia	Nigeria
Brazil	Ireland	Norway
Bulgaria	Italy	Oman
Canada	Japan	Papua New Guinea
China	Kazakhstan	Philippines
Colombia	Kenya	Qatar
Cook Islands	Kuwait	Romania
Czech Republic	Laos	Samoa
Fiji	Malaysia	Saudi Arabia
France	Mozambique	Singapore

Coming soon

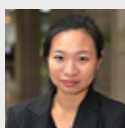
Solomon Islands	Argentina
South Africa	Belgium
South Korea	Cambodia
Spain	Germany
Taiwan	Guam
Thailand	Israel
Timor Leste	Kiribati
Tonga	Marshall Islands
Turkey	Morocco
UAE	Netherlands
USA	Peru
UK	Switzerland
Vanuatu	
Vietnam	

Interested in discussing or seeing a demo of the Global Employment Taxes Portal?

Request access here <http://globalemploymenttaxes.pwc.com/>, or contact us by email: GlobalEmploymentTaxes@au.pwc.com and we would be delighted to help.



Lisa Hando
lisa.hando@pwc.com
+61 (0) 8 9238 5116



Angela Diec
angela.diec@pwc.com
+61 (0) 2 8266 9644



Karen Toora
karen.toora@pwc.com
+44 (0) 7843 331 224



Aoife Reid
aoife.reid@pwc.com
+353 1792 5081



Rick Shaw
richard.w.shaw@pwc.com
+44 (0) 7740 241 045

© 2019 PwC. All rights reserved.

PwC refers to the PwC network and/or one or more of its member firms, each of which is a separate legal entity. Please see www.pwc.com/structure for further details. This content is for general information purposes only, and should not be used as a substitute for consultation with professional advisors. At PwC Australia our purpose is to build trust in society and solve important problems. PwC is a network of firms in 158 countries with over 250,000 people who are committed to delivering quality in assurance, advisory and tax services. Find out more and tell us what matters to you by visiting us at www.pwc.com.

127073201/1020