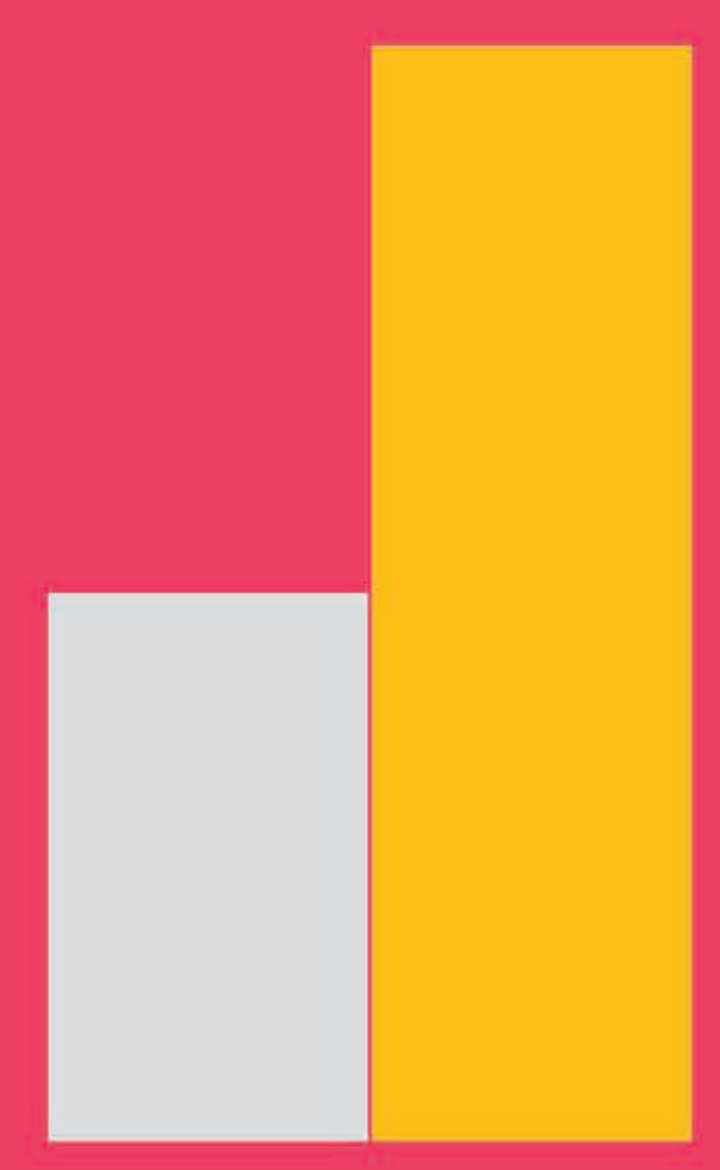


DEMOGRAPHIC SHIFTS



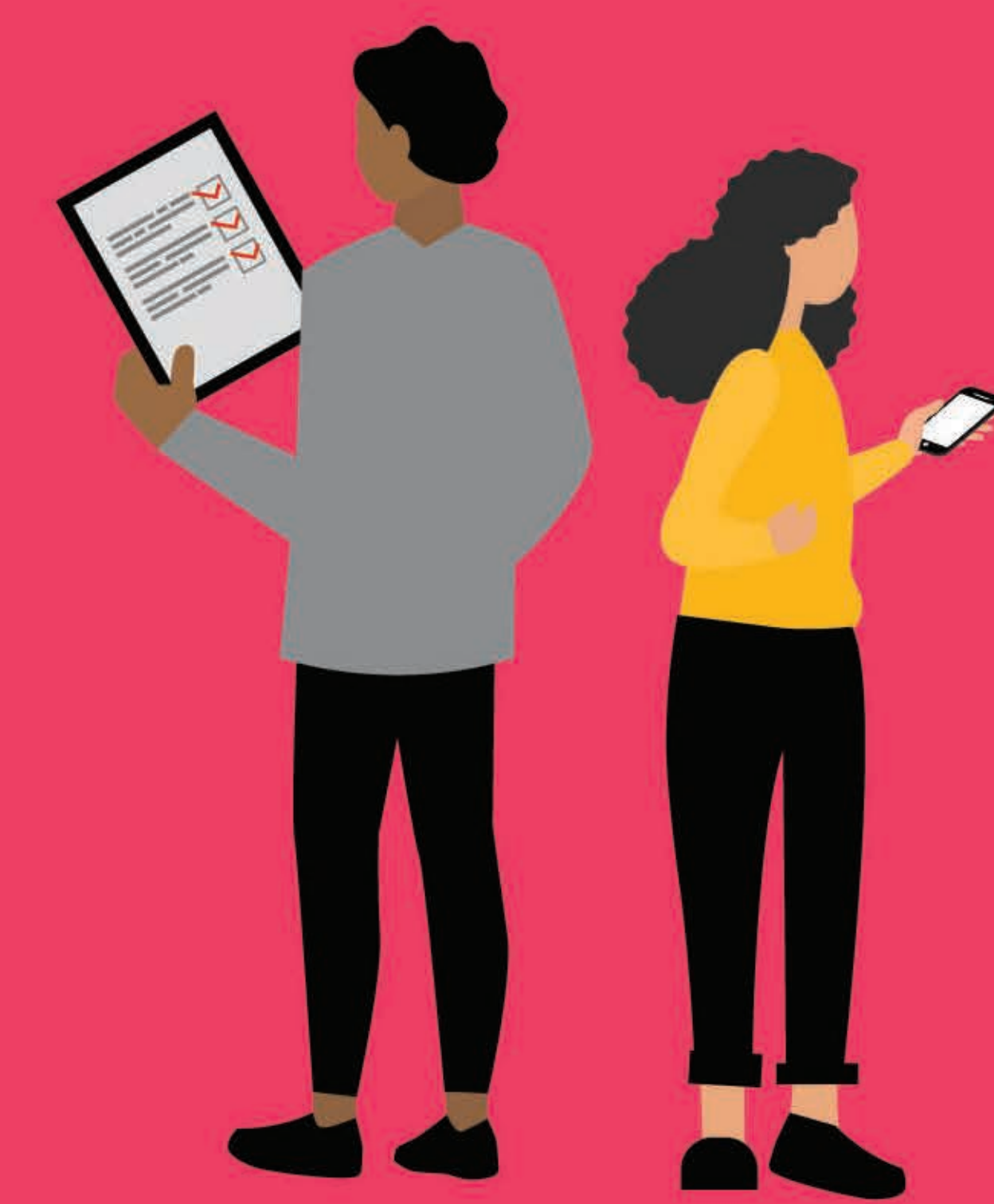
Youth unemployment high
15.6% vs **5.4%**
(youth) (whole working population)



Australia has an ageing population:
65+ projected to more than double by 2054-55.



1 in 1,000 people projected to be aged over 100 (2054-55). In 1975, this was 1 in 10,000.



62.4%
(2054-55)

Participation rate for people aged over 15 years projected from 64.6% (2014-15).



By 2031, Australia's population is estimated to have **1.1 million** fewer people than if COVID-19 had never happened.



2.6 years time taken for a young person to transition from full time education to full time work.

