

r43.06

IN THE SUPREME COURT OF VICTORIA AT MELBOURNE
COMMERCIAL AND EQUITY DIVISION
COMMERCIAL COURT

S CI 2011

**IN THE MATTER OF WILLMOTT FORESTS LIMITED (RECEIVERS AND MANAGERS
APPOINTED) (IN LIQUIDATION) (ACN 063 263 650)**

**WILLMOTT FORESTS LIMITED (RECEIVERS AND MANAGERS APPOINTED) (IN
LIQUIDATION) (ACN 063 263 650) IN ITS CAPACITY AS RESPONSIBLE ENTITY OF THE
MANAGED INVESTMENT SCHEMES LISTED IN SCHEDULE 2 AND IN ITS CAPACITY AS
MANAGER OF THE UNREGISTERED SCHEMES LISTED IN SCHEDULES 3 AND 4
AND ORS ACCORDING TO SCHEDULE 1**

Plaintiffs

CERTIFICATE IDENTIFYING EXHIBIT

Date of document: 13 December 2011
Filed on behalf of: the Plaintiffs

Prepared by:

ARNOLD BLOCH LEIBLER

Lawyers and Advisers

Level 21

333 Collins Street

MELBOURNE 3000

Solicitor's Code: 54

DX 38455 Melbourne

Tel: 9229 9999

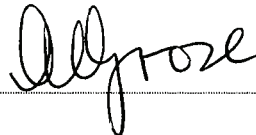
Fax: 9229 9900

Ref: 011565031

(Kimberley MacKay: kmackay@abl.com.au)

This is the exhibit marked "**CDC-24**" now produced and shown to **CRAIG DAVID CROSBIE** at the time of swearing his affidavit on 13 December 2011.

Before me:



MEAGAN LOUISE GROSE

Arnold Bloch Leibler

Level 21, 333 Collins Street

Melbourne 3000

An Australian Legal Practitioner within the
meaning of the Legal Profession Act 2004

Exhibit "CDC-24"
Fire Preparation Report

Subject: 2011/12 Willmott Forests Fire Preparations

Date: 27 October 2011
 To: Brian Webster (Korda Mentha)
 From: Stephen Addicott and Angus Mc Eachern, Willmott Forests

☐ ☐ Urgent ☐ Please Comment ☐ For your information

Introduction

The purpose of this memo is to:

- 1) Provide an overview of the current level of fire preparations of the Willmott Forests plantations (excluding plantations managed by Hancock Victorian Plantations (HVP) and Forests NSW); and
- 2) Present the Willmott Forests 2011/12 FY budget relating to fire prevention works.

The major items covered in the memo include:

1. 2011 Regional rainfall summary – Jan. to Sep. 2011
2. 2011 WFL plantation fire risk assessment – October 2011
3. 2011 WFL fire prevention works
4. 2011/12 Fire suppression capacity
5. 2011/12 FY fire prevention budget

List of Figures & Tables

Figure 1: Tumbarumba (NSW) rainfall Jan-Sep 2011.
 Figure 2: Bombala (NSW) rainfall Jan-Sep 2011.
 Figure 3: Casino (NSW) rainfall Jan-Sep 2011.
 Figure 4: Probability of above median rainfall between Oct-Dec 2011 (BOM).
 Figure 5: Stream crossing damage – Coppabella Station (MV), October 2011.
 Figure 6: Woody weed encroachment on major tracks – Springdale plantation (MV) October 2011.
 Figure 7: Grass growth on access track – Noonameena plantation (MV) October 2011.
 Figure 8: Depicts the current status of grass growth on roadside verges in the Bombala region (Mila 5 plantation October 2011).

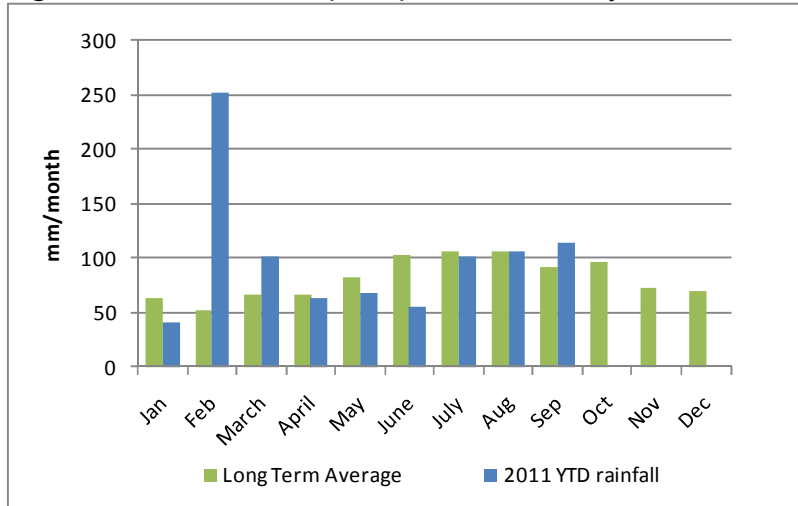
Table 1: Probability of at least 100mm of rainfall between Oct-Dec 2011 (BOM).
 Table 2: Financial impact criteria (consequences)
 Table 3: Potential for a major fire event criteria (likelihood)
 Table 4: Indicative fire risk assessment ratings (consequences by likelihood)
 Table 5: WFL plantation estate indicative fire risk as at October 27, 2011
 Table 6: WFL fire fighting equipment by region
 Tables 7: Bombala/Braidwood region proposed fire prevention budget
 Tables 8: Murray Valley region proposed fire prevention budget
 Tables 9: North Coast region proposed fire prevention budget
 Tables 10: All regions 2011/12 proposed fire prevention budget

1. Regional rainfall summary -Jan-Sep 2011

1.1 Tumbarumba (Murray Valley region) regional rainfall summary

Rainfall for Tumbarumba (MV region) up until the end of September was 903mm compared with the long term average of 734mm for this period. Rainfall for the July-September quarter was 323mm against a long term average of 303mm with the last major rainfall event recording 72mm on the 29th/30th September 2011. Soil conditions are wet to saturated although fuel loads are increasing rapidly with strong grass and weed growth. Figure 1 depicts the 2011 monthly rainfall for Tumbarumba.

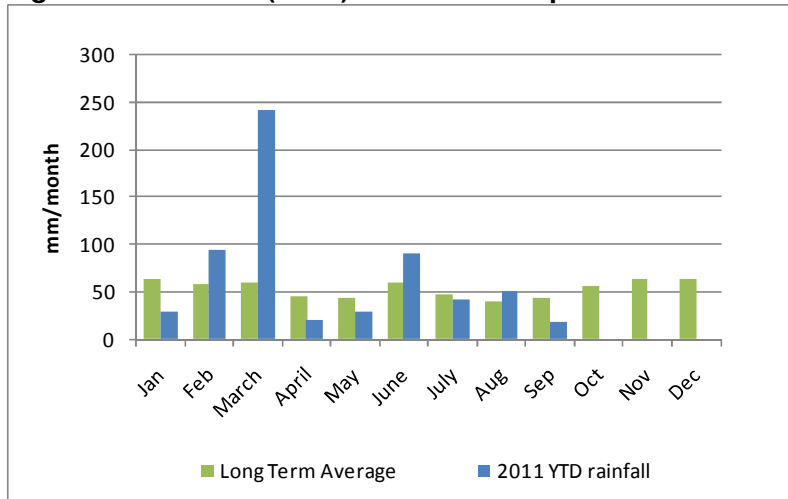
Figure 1: Tumbarumba (NSW) rainfall Jan-Sep 2011.



1.2 Bombala regional rainfall summary

Rainfall for Bombala up until the end of September was 615mm compared with the long term average of 460mm for this period. Rainfall for the July-September quarter was 111mm against a long term average of 131mm with the last moderate rainfall event recording 11mm on the 9th/11th October 2011. Soil conditions are moist to wet with good grass growth increasing regional fuel loads. Figure 2 depicts the 2011 monthly rainfall for Bombala.

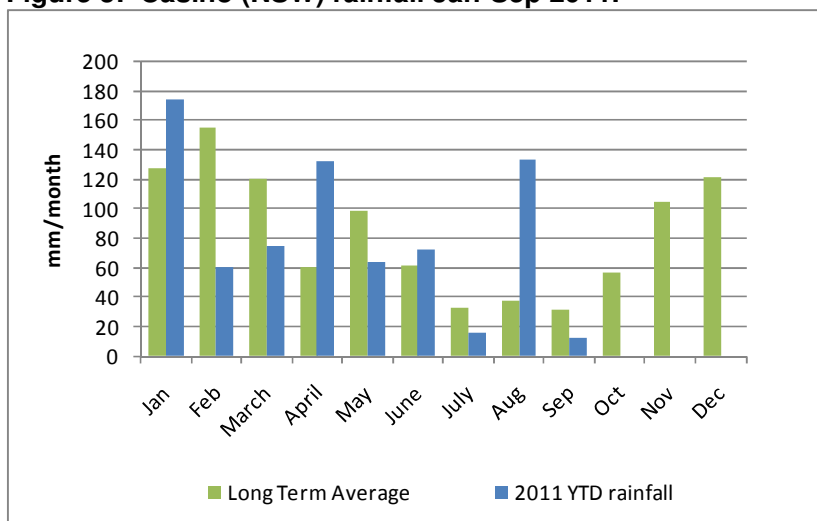
Figure 2: Bombala (NSW) rainfall Jan-Sep 2011.



1.3 Casino (North Coast region NSW) regional rainfall summary

The fire seasons on the North Coast of NSW typically occurs several months before south eastern Australia (Bombala and the Murray Valley) with peak fire conditions occurring between September and January. Rainfall for the central regional town of Casino up until the end of September was 739mm compared with the long term average of 724mm for this period. Rainfall for the July-September quarter was 162mm against a long term average of 101mm with the last moderate rainfall event recording 22mm on the 15th/16th October 2011. Soil conditions are moist to dry with high grass fuel loads across the region. Figure 3 depicts the 2011 monthly rainfall for Casino.

Figure 3: Casino (NSW) rainfall Jan-Sep 2011.



1.4 Forecast Climatic Conditions

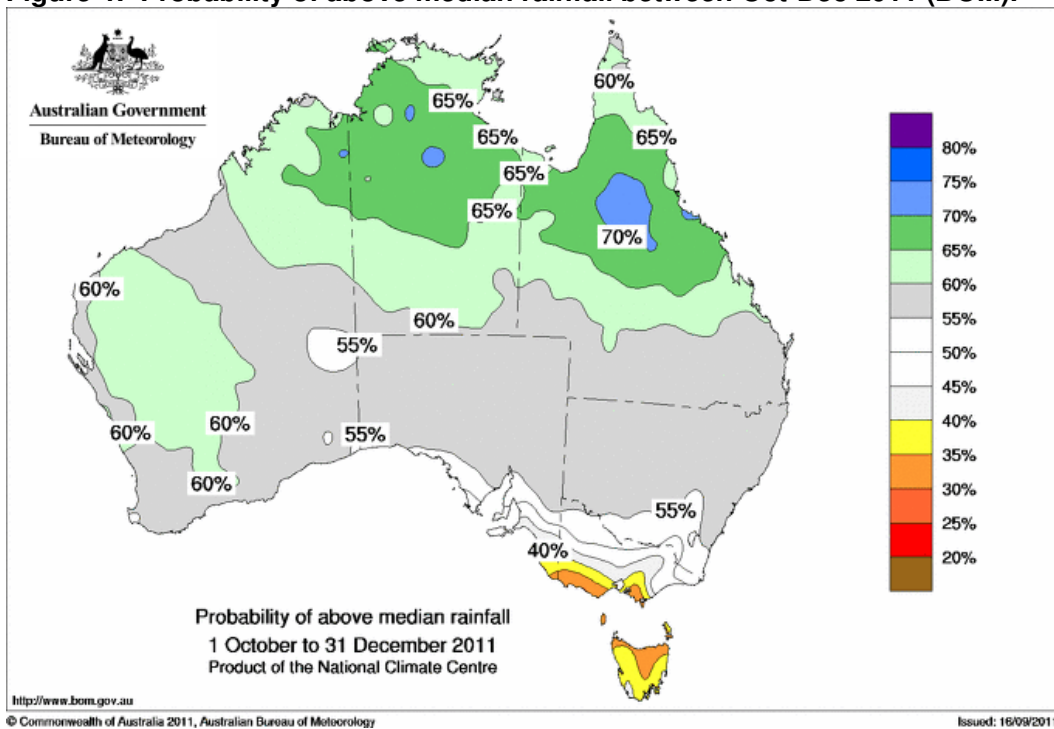
The Australian Bureau of Meteorology (BOM) web site provides information on forecast rainfall for the period October 1 – December 31 2011. As detailed in Figure 4 (next page), there is a 55% probability of above median rainfall for the North Coast and a 50% chance of achieving the median rainfall for the Bombala/Murray Valley regions. This forecast is consistent with the prediction of a weak La Nina that is offset against a slightly positive dipole event in the Indian Ocean. A positive dipole event increases the chance of below average rainfall over south-eastern Australia during Spring.

The BOM website also provides probabilities for achieving at least 100mm of rainfall for the Oct-Dec period for regional towns including Cooma (Bombala/Braidwood), Tumut (MV), and Grafton (North Coast). The occurrence of at least 100mm over the next 3 months would substantially reduce the chances of high fire danger ratings occurring prior to January 2012.

Table 1: Probability of at least 100mm of rainfall between Oct-Dec 2011 (BOM).

Location	Region	25mm	50mm	75mm	100mm
Cooma	Bombala/Braidwood	100%	100%	98%	83%
Tumut	Murray Valley	100%	100%	96%	89%
Grafton	North Coast	100%	100%	100%	96%

Figure 4: Probability of above median rainfall between Oct-Dec 2011 (BOM).



2. 2011 WFL plantation fire risk assessment – October 2011

The assessment of plantation fire risk is highly subjective and the level of detail can vary significantly depending upon the resources available. From time to time WFL commissioned experienced fire management consultants to undertake Maximum Probable Loss Assessments which took into account a range of financial and environmental information to assess fire risk. This detailed work however is not usually undertaken on a season by season basis.

As an indicative guide for the 2011 fire season, WFL management assessed each plantation in terms of the likelihood and financial impact of a major fire event. Tables 2 & 3 detail the criteria assessed.

Table 2: Financial impact criteria (consequences)

Financial Impact	Low	Low to Moderate	Moderate	Moderate to High	High
Ranking	1	2	3	4	5
Plantation age	<5	5-9	10-14	15-19	20+
Plantation size	<100 ha	100-199 ha	199-299 ha	300-399 ha	400+ ha
Plantation quality	Low growth, Low stocking	Low growth, Mod stocking	Mod growth, Mod stocking	Good growth Unthinned	Good growth Thinned

Table 3: Potential for a major fire event criteria (likelihood)

Potential for a major fire event	Low	Low to Moderate	Moderate	Moderate to High	High
Ranking	1	2	3	4	5
Road access	Harvest roads & immediate access	Harvest roads but no immediate access	Immediate road access or formed tracks	Moderate access Dirt tracks	Difficult access Dirt tracks
Fuel Loads	Low	Low to Moderate	Moderate	Moderate - High	High
Seasonal conditions	Low	Moderate	High	Very High	Extreme

Multiplying the consequences and likelihood rating tables provides the following indicative fire risk assessment (Table 3). Rankings of <5 are considered to be low risk, 5-9 moderate risk, 10-14 high risk, 15-19 very high risk and >20, extreme risk.

Table 4: Indicative fire risk assessment ratings (consequences by likelihood)

Ratings	Likelihood of a major fire event					
5	High	Moderate Risk	High Risk	Very High Risk	Very High Risk	Extreme Risk
4	Moderate to high	Low Risk	Moderate Risk	High Risk	Very High Risk	Very High Risk
3	Moderate	Low Risk	Moderate Risk	Moderate Risk	High Risk	Very High Risk
2	Low-Moderate	Low Risk	Low Risk	Moderate Risk	Moderate Risk	High Risk
1	Low	Low Risk	Low Risk	Low Risk	Low Risk	Moderate Risk
Financial Impact		Low	Low to Moderate	Moderate	Moderate - High	High
Ratings		1	2	3	4	5

The plantation by plantations results of this simple assessment are provided in Appendix 1. Table 5 below provides a summary of the indicative fire risk as at October 27, 2011.

Table 5: WFL plantation estate indicative fire risk as at October 27, 2011

Region	Plantation Areas	Low Risk	Moderate Risk	High Risk	Very High Risk	Extreme Risk
Bombala/Braidwood	16,635 npha	1%	69%	30%	0%	0%
Murray Valley	10,720 npha	9%	71%	20%	0%	0%
North Coast	4,567 npha	29%	71%	0%	0%	0%

Please note that the fire risk assessment provided, reflects the subjective views and opinions of WFL management as at October 2011. Updated assessments need to be undertaken on a monthly basis as the fire season progresses. More detailed assessments by fire management consultants should be obtained in the event that anyone (or group) need to rely upon this information for legal or insurance purposes.

3. 2011 WFL fire prevention works

3.1 Road Maintenance 2011

Road maintenance works include:

- Stream crossing repairs;
- Woody weed removal from road verges
- Road spraying or grading – to remove grasses and weeds and provide smooth truck access;
- Culvert clearing and replacement;
- Fallen tree removal;
- Branch removal of overhanging plantations using a flail machine – used in plantations older than 8 years of age.

A number of stream crossing repairs are required across the WFL plantation estate particularly in the Murray Valley where floods in October 2010 caused substantial damage. Figure 5 provides an example of one of the stream crossings requiring repairs at Coppabella Station (MV). As most of these roads will not be required for log haulage for at least 10 years WFL management recommend that repairs be limited to improving access across the streams by grading the banks and consolidating the stream base, rather than replace the major culverts that were washed away.

Figure 5: Stream crossing damage – Coppabella Station (MV), October 2011.



A number of plantations require woody weed removal from road verges to improve road access. Most of the woody weed germination is now >12 months old and is impacting upon visibility and access. The budget proposed by WFL management is for the removal of woody weeds through the use of a small dozer with clearing limited to the major arterial access roads in each plantation. Further funds will be required to clear all internal access tracks across the plantation estate should this be considered necessary. Figure 6 provides an example of woody weed germination encroaching upon a major arterial road in the Springdale plantation in the Murray Valley.

Figure 6: Woody weed encroachment on major tracks – Springdale plantation (MV) October 2011.



To maintain grass control along access tracks, tracks are routinely sprayed or graded. Spraying is a more cost effective means of maintaining track grass control but needs to be undertaken in late September and early October for it to be effective. Due to a lack of funds, spraying has not been undertaken and WFL management recommend track grading across a number of the major arterial roads and major firebreak access tracks. Figure 7 provides an example of grass growth within the Noonameena plantation in the Murray Valley region.

Figure 7: Grass growth on access track – Noonameena plantation (MV) October 2011.



The removal of fallen trees across tracks is typically undertaken in early to mid December just before the start of the fire season. These operations are one of the last road maintenance operations undertaken as strong winds throughout Spring often bring down large branches/trees from native vegetation within the plantations. Wind damage to pine plantations themselves is typically restricted to older plantations that received delayed

thinning operations. This risk is limited to only a few older plantations in the Bombala region and these plantations will be monitored regularly for major wind damage events.

3.2 Firebreak maintenance 2011

The maintenance of grasses on roadside verges and firebreaks can be undertaken through herbicide spraying, slashing or mechanical cultivation. The approach taken depends largely upon the timing of the works and the provision of funds. As previously mentioned most firebreak spraying should be undertaken in late September and October. Due to the lack of funds this work has not been undertaken across the WFL estate.

Slashing of roadside verges and firebreaks is undertaken between October and mid December. It is important to undertake slashing prior to the onset of high fire danger periods but late enough to minimise grass regrowth. In the budget presented, WFL management have assumed that funds will be made available for slashing by the 15 November 2011. Should approvals be delayed increased funds will be required to undertake mechanical cultivation to reduce roadside fuel loads.

Figure 8: Depicts the current status of grass growth on roadside verges in the Bombala region (Mila 5 plantation October 2011).



Note: The dry grass matter shown above is the remaining growth from the 2010 Spring. New grass growth for the 2011 Spring will significantly increase fuel loads as it cures over the next few months.

4. 2011/12 WFL fire suppression capacity

4.1 Equipment

WFL fire fighting equipment is limited to specialized 1,000 litre slip on units that are attached to Land cruiser or Hi-lux tray vehicles. Table 6 below details the vehicles and slip-on units currently held by WFL.

Table 6: WFL fire fighting equipment by region

Region	# of slip on firefighting units	# of tray vehicles to carry slip on units
Bombala/Braidwood	5	0
Murray Valley	6	0
North Coast	3	1

The lack of suitable WFL vehicles to carry slip-on units will need to be filled by external contractors employed as fire fighting contractors. Funds in the order of \$5,000 will be required for maintenance of the slip-on units over the next 6 weeks.

4.2 Staff

Current WFL staff still employed to manage the Willmott Forests estate include:

- Stephen Addicott – Plantation Resource Manager, Melbourne.
- Angus Mc Eachern – General Manager Forestry Operations, Melbourne.
- Toni Smith – Operations Manager Bombala/Braidwood.
- Anthony Jarvis – Operations Manager North Coast.

With such limited staff numbers the principal role that staff can play in a fire suppression event is to act as a liaison officer with regional fire suppression authorities (RFS, CFA, Forests NSW, DSE and other private plantation owners). During major fire events that extend beyond 12 hours, staff will be required to take 8 hours break prior to resuming this liaison role. Consequently there may be periods during major fire suppression events where fires threatening WFL plantations will not have a WFL staff member assisting the suppression activities.

Another point of concern is in relation to fire standby. Typically forest management staff undertake fire standby duties in accordance with a roster with each member being on 'duty' for one week out of every two or three. With only a single staff member in each region staff cannot be expected to be on call 100% of the time. While staff will attempt to be available during high fire danger periods we note that this is not practically possible all of the time. We also note that the high level of diligence of staff in protecting the WFL plantations may lead to fatigue and stress, which can directly impact employee's ability to make rational and functional decisions on the fire ground.

4.2 Employment of fire crews

For the protection of the assets, WFL management recommend the employment of fire crews in each of the Murray Valley and Bombala regions throughout the 2011/12 fire season.

Each crew will need to maintain a minimum for 4 accredited fire fighting staff and be able to provide 2 trade vehicles for the use of WFL's slip on units. Each crew will need to have at

least one crew leader with the required experience and training to manage fire suppression operations.

4.2 Emergency fire suppression funds

The budget presented in this memorandum does not allow for additional costs associated with fire suppression activities. WFL management recommend an amount of \$30,000 per fire event be set aside for discretionary use by WFL staff in the event of a fire suppression emergency. Typically these funds will be used to employ earthmoving contractors to create firebreaks or as a direct attack response while fires are still small.

It is recommended that WFL staff have the capacity to deploy fire fighting contractors to any fire incident that is within a 5km radius of a WFL plantation.

5. 2011/12 WFL Fire prevention budget

Tables 7-9 detail the proposed 2011/12 fire prevention budgets for the WFL Bombala/Braidwood, Murray Valley and North Coast regions. Table 10 provides the combined budget for all three regions and details a total estimated cost of \$380,000. Through the employment of summer fire-fighting crews it is possible to reduce the total of \$23,000 allocated for 'road maintenance – track clearing of woody weeds'. Summer crews can also be used to reduce other annual costs such as woody weed control (within young plantations) and noxious weed control.

Tables 7: Bombala/Braidwood region 2011/12 proposed fire prevention budget

Work Requirements	Description	Implementation Period	November	December	January	February	March	Amount
Road mt'ce stream crossings	Bendoc 2,4/Delegate1-4/Glengarry	15 Nov 2011 - 8 Jan 2012	\$4,500	\$5,700	\$1,800	\$0	\$0	\$12,000
Firebreak mt'ce - slashing & cultivation if req'd.	All Plantations w here required	15 Nov 2011 - 8 Jan 2012	\$11,375	\$18,375	\$5,250	\$0	\$0	\$35,000
Flail machine	Bendoc 8&9, Delegate 8, (Numeralla, Kybeyan - TBA)	15 Nov 2011 - 15 Jan 2012	\$4,400	\$8,400	\$3,200	\$0	\$0	\$16,000
Road mt'ce track clearing of woody weeds	Ando, Bendoc1-4,Bombala 1, Craigie 1-4, Delegate 5-7, Paddys Flat, Pericoe	28 Nov 2011 - 22 Jan 2012	\$0	\$7,280	\$5,720	\$0	\$0	\$13,000
Summer crew	4 man crew with two 4WD tray vehicles	19 Dec 2011 - 18 Mar 2012	\$0	\$12,800	\$27,200	\$27,200	\$12,800	\$80,000
Total			\$20,275	\$52,555	\$43,170	\$27,200	\$12,800	\$156,000

Tables 8: Murray Valley region 2011/12 proposed fire prevention budget

Work Requirements	Description	Implementation Period	November	December	January	February	March	TOTALS
Road mt'ce stream crossings	Coppabella, Noona, Girrahween, Murrumbung, Bellmolong	15 Nov 2011 - 8 Jan 2012	\$9,100	\$14,700	\$4,200	\$0	\$0	\$28,000
Firebreak mt'ce - slashing & cultivation if req'd.	All Plantations w here required	15 Nov 2011 - 22 Jan 2012	\$18,750	\$33,750	\$22,500	\$0	\$0	\$75,000
Flail machine	N/A		\$0	\$0	\$0	\$0	\$0	\$0
Road mt'ce track clearing of woody weeds	Ardsley, Eskett, Kimberley, Watercreek, Tatha, Fairfield, Smiths	28 Nov 2011 - 29 Jan 2012	\$0	\$5,000	\$5,000	\$0	\$0	\$10,000
Summer crew	4 man crew with two 4WD tray vehicles	19 Dec 2011 - 18 Mar 2012	\$0	\$12,800	\$27,200	\$27,200	\$12,800	\$80,000
Total			\$27,850	\$66,250	\$58,900	\$27,200	\$12,800	\$193,000

Tables 9: North Coast region 2011/12 proposed fire prevention budget

Work Requirements	Description	Implementation Period	November	December	January	February	March	TOTALS
Road mt'ce stream crossings	Culmarran, Camira, Rocklea, Stormat, Wellingtonvale	16 Nov 2011 - 8 Jan 2012	\$2,000	\$4,000	\$2,000	\$0	\$0	\$8,000
Firebreak mt'ce - slashing & cultivation	All Plantations w here required	17 Nov 2011 - 22 Jan 2012	\$6,000	\$10,000	\$7,000	\$0	\$0	\$23,000
Flail machine			\$0	\$0	\$0	\$0	\$0	\$0
Road mt'ce track clearing of woody w eeds			\$0	\$0	\$0	\$0	\$0	\$0
Summer crew	TBC - Dependent on season		\$0	\$0	\$0	\$0	\$0	\$0
Total			\$8,000	\$14,000	\$9,000	\$0	\$0	\$31,000

Tables 10: All regions 2011/12 proposed fire prevention budget

Work Requirements	Description	Implementation Period	November	December	January	February	March	TOTALS
Road mt'ce stream crossings		15 Nov 2011 - 16 Jan 2012	\$15,600	\$24,400	\$8,000	\$0	\$0	\$48,000
Firebreak mt'ce - slashing & cultivation		15 Nov 2011 - 22 Jan 2012	\$36,125	\$62,125	\$34,750	\$0	\$0	\$133,000
Flail machine		15 Nov 2011 - 15 Jan 2012	\$4,400	\$8,400	\$3,200	\$0	\$0	\$16,000
Road mt'ce track clearing of woody w eeds		28 Nov 2011 - 22 Jan 2012	\$0	\$12,280	\$10,720	\$0	\$0	\$23,000
Summer crew		19 Dec 2011 - 18 Mar 2012	\$0	\$25,600	\$54,400	\$54,400	\$25,600	\$160,000
Total			\$56,125	\$132,805	\$111,070	\$54,400	\$25,600	\$380,000

Appendix 2 provides a Gannt chart of the indicative weekly expenditure for Tables 7-10 above. The timing of cost allocation detailed in these tables is indicative only as they are in part dependent upon the prevailing fire conditions. Additional costs for fire standby maybe incurred in the event of a very high to extreme fire season.

6. Concluding remarks

WFL management consider that the provision of funding for road maintenance, firebreak maintenance and fire suppression crews are essential for the protection of the WFL plantation estate throughout the 2011/12 fire season. The prescribed fire season, as determined by the NSW Rural Fire Service, commenced in both Bombala and the North Coast regions on October 1 2011. The Murray Valley prescribed fire season is scheduled to commence on November 1 2011. Given this the approval of the budget presented in this report is requested by no later than November 15 2011, as delays beyond this date will impact upon the level of fire preparedness in place prior to the onset of high fire danger conditions. WFL staff will endeavour to provide monthly updates of the fire danger risk taking into account seasonal conditions and the completion of fire prevention works.

While the current fire risk assessment (as of 27 October 2012) ranges from low to high across the estate, the high level of fuel coupled with the absence of plantation maintenance works since September 2010, will result in a very high to extreme fire risk across the estate under 'average' fire season conditions.

In the event that no funding is provided for the 2011/12 fire season, as was the case in 2010/11, WFL management will contact the major fire-fighting agencies in each region to inform them of the heightened fire risk and the lack of fire access within a number of the WFL plantations. It is the recommendation of WFL management that should no funding be provided for fire prevention and suppression works for the 2011/12 season that WFL staff are not required to attend fires in WFL plantations due to the very high fire risk that may apply.

Should funding only be provided for road and firebreak maintenance and not for fire suppression activities an increased risk of fire damage is likely to result as the major fire fighting agencies are more likely to protect plantation assets of those organisations that have fire suppression capabilities.

Stephen Addicott
Plantation Resource Manager
Willmott Forests

October 27 2011

Bombala region October 2011 plantation risk ratings

[illegible]

Murray Valley region October 2011 plantation risk ratings

Plantations	Year Planted	Net Stocked Areas	Financial Impact Ratings (1-5)				Likelihood of damage from a major fire				Plantation Fire Risk Rating	
			Age	Plantation Size	Quality or Value	Average Financial Impact	Road Access	Fuel Loads	Seasonal conditions	Average Likelihood of damage		
Ardasley 1	2008	177 ha	1	2	3	2.0	2	1	3	2.0	4.0	Low Risk
Ardasley 2	1989	33 ha	5	1	3	3.0	2	1	3	2.0	6.0	Mod Risk
Bellmolong	2006	102 ha	2	2	2	2.0	3	5	3	3.7	7.3	Mod Risk
Billaroy	2005	334 ha	2	4	3	3.0	3	3	3	3.0	9.0	Mod Risk
Boomaroo	2005	171 ha	2	2	2	2.0	2	1	3	2.0	4.0	Low Risk
Broughtons	2006	369 ha	2	4	2	2.7	3	1	3	2.3	6.2	Mod Risk
Carabost 1	2005	336 ha	2	4	3	3.0	3	1	3	2.3	7.0	Mod Risk
Coppabella 1	2008	667 ha	1	5	3	3.0	3	5	3	3.7	11.0	High Risk
Coppabella 2	2009	387 ha	1	4	3	2.7	3	5	3	3.7	9.8	Mod Risk
Dakota	2007	80 ha	1	1	3	1.7	3	5	3	3.7	6.1	Mod Risk
Dunkirk	2006	194 ha	2	2	3	2.3	3	3	3	3.0	7.0	Mod Risk
Duntulm 1	2008	99 ha	1	1	3	1.7	3	3	3	3.0	5.0	Mod Risk
Duntulm 2	2008	78 ha	1	1	3	1.7	3	3	3	3.0	5.0	Mod Risk
Eagle Ridge	2007	111 ha	1	2	3	2.0	3	3	3	3.0	6.0	Mod Risk
Eskett	2005	167 ha	2	2	3	2.3	3	2	3	2.7	6.2	Mod Risk
Fairfield 1	2005	54 ha	2	1	3	2.0	2	1	3	2.0	4.0	Low Risk
Fairfield 2	2005	76 ha	2	1	3	2.0	2	1	3	2.0	4.0	Low Risk
Girrahween 1	2006	283 ha	2	3	3	2.7	3	5	3	3.7	9.8	Mod Risk
Girrahween 2	2006	72 ha	2	1	3	2.0	3	5	3	3.7	7.3	Mod Risk
Girrahween 3	2007	73 ha	1	1	3	1.7	3	5	3	3.7	6.1	Mod Risk
Goodradigbee 1	2005	241 ha	2	3	2	2.3	3	3	3	3.0	7.0	Mod Risk
Goodradigbee 2	2006	123 ha	2	2	2	2.0	3	3	3	3.0	6.0	Mod Risk
Grassdale	2006	112 ha	2	2	3	2.3	3	2	3	2.7	6.2	Mod Risk
Greenlands	2009	34 ha	1	1	3	1.7	3	2	3	2.7	4.4	Low Risk
Hadley Park	2007	285 ha	1	3	3	2.3	3	4	3	3.3	7.8	Mod Risk
Humula 1	2007	106 ha	1	2	3	2.0	3	3	3	3.0	6.0	Mod Risk
Ingleneuk	2005	194 ha	2	2	3	2.3	3	5	3	3.7	8.6	Mod Risk
Kathlen	2007	193 ha	1	2	3	2.0	3	5	3	3.7	7.3	Mod Risk
Kimberley 2	2006	75 ha	2	1	3	2.0	3	3	3	3.0	6.0	Mod Risk
Kimberley 3	2006	76 ha	2	1	3	2.0	3	3	3	3.0	6.0	Mod Risk
Kimberley Park	2005	255 ha	2	3	3	2.7	3	3	3	3.0	8.0	Mod Risk
Marjenbar 1	2006	20 ha	2	1	3	2.0	3	5	3	3.7	7.3	Mod Risk
Marjenbar 2	2007	273 ha	1	3	3	2.3	3	5	3	3.7	8.6	Mod Risk
Marjenbar 3	2007	57 ha	1	1	3	1.7	3	5	3	3.7	6.1	Mod Risk
Masonleigh	2008	83 ha	1	1	3	1.7	3	5	3	3.7	6.1	Mod Risk
Murrumbung	2006	250 ha	2	3	2	2.3	3	4	3	3.3	7.8	Mod Risk
Murrumbung 2	2007	208 ha	1	3	3	2.3	3	4	3	3.3	7.8	Mod Risk
Murrumbung 3	2008	191 ha	1	2	3	2.0	3	4	3	3.3	6.7	Mod Risk
Noonameena	2009	451 ha	1	5	3	3.0	3	5	3	3.7	11.0	High Risk
Ravensfield (leased)	2009	13 ha	1	1	3	1.7	3	5	3	3.7	6.1	Mod Risk
Smiths	2007	90 ha	1	1	3	1.7	2	1	3	2.0	3.3	Low Risk
Springdale	2007	250 ha	1	3	3	2.3	3	5	3	3.7	8.6	Mod Risk
Takajo 2	2005	248 ha	2	3	3	2.7	3	3	3	3.0	8.0	Mod Risk
Takajo 3	2007	52 ha	1	1	3	1.7	3	3	3	3.0	5.0	Mod Risk
Takajo 4	2007	170 ha	1	2	2	1.7	3	3	3	3.0	5.0	Mod Risk
Takajo 5	2009	182 ha	1	2	3	2.0	3	3	3	3.0	6.0	Mod Risk
Takejo 1	2005	1,065 ha	2	5	3	3.3	3	3	3	3.0	10.0	High Risk
Taradale 1	2006	174 ha	2	2	3	2.3	3	5	3	3.7	8.6	Mod Risk
Tatha 1	2005	30 ha	2	1	3	2.0	3	1	3	2.3	4.7	Low Risk
Tatha 2	2009	41 ha	1	1	3	1.7	3	1	3	2.3	3.9	Low Risk
Wake	2005	179 ha	2	2	3	2.3	3	4	3	3.3	7.8	Mod Risk
Watercreek 1	2005	106 ha	2	2	3	2.3	3	3	3	3.0	7.0	Mod Risk
Watercreek 1.2	1991	44 ha	5	1	3	3.0	3	3	3	3.0	9.0	Mod Risk
Watercreek 2	2006	231 ha	2	3	3	2.7	3	3	3	3.0	8.0	Mod Risk
Watercreek 2.1	1991	47 ha	5	1	3	3.0	3	3	3	3.0	9.0	Mod Risk
Watercreek 2.2	1991	19 ha	5	1	3	3.0	3	3	3	3.0	9.0	Mod Risk
Wattlebank 1	2006	167 ha	2	2	3	2.3	3	5	3	3.7	8.6	Mod Risk
Wattlebank 2	2006	99 ha	2	1	3	2.0	3	5	3	3.7	7.3	Mod Risk
Wee Jasper	2006	160 ha	2	2	2	2.0	3	3	3	3.0	6.0	Mod Risk
Wyora 1	2006	61 ha	2	1	2	1.7	2	2	3	2.3	3.9	Low Risk
Wyora 2	2007	111 ha	1	2	2	1.7	2	2	3	2.3	3.9	Low Risk
Wyora 3	2007	97 ha	1	1	2	1.3	2	2	3	2.3	3.1	Low Risk
Murray Valley		10,720 ha										

North Coast region October 2011 plantation risk ratings

[illegible]

Appendix 2: Fire prevention Gannt Charts

Tables 1: Bombala/Braidwood region 2011/12 proposed fire prevention budget – Gannt Chart

Work Requirements	Description	Implementation Period	15-20 Nov	21-27 Nov	28 Nov-4 Dec	5-11 Dec	12-18 Dec	19-25 Dec	26 Dec-1 Jan	2-8 Jan	9-15 Jan	16-22 Jan	23-29 Jan	30 Jan-5 Feb	6-12 Feb	13-19 Feb	20-26 Feb	27 Feb-4 Mar	5-11 Mar	12-18 Mar	19-25 Mar	26-31 Mar	Amount
Road m'tce stream crossings	Bendoc 2,4/Delegate 1-4/Glangarry	15 Nov 2011 - 8 Jan 2012	\$1,800	\$1,800	\$1,800	\$1,800	\$1,800	\$1,200		\$1,800													\$12,000
Firebreak m'tce - slashing & cultivation if req'd.	All Plantations where required	15 Nov 2011 - 8 Jan 2012	\$3,500	\$5,250	\$5,250	\$5,250	\$5,250	\$5,250		\$5,250													\$35,000
Flail machine	Bendoc 8&9, Delegate 8, (Numeralla, Kybeyan - TBA)	15 Nov 2011 - 15 Jan 2012	\$1,600	\$1,600	\$2,400	\$2,400	\$2,400	\$2,400		\$1,600	\$1,600												\$16,000
Road m'tce track clearing of woody weeds	Ando, Bendoc 1-4, Bombala 1, Craigie 1-4, Delegate 5-7, Paddys Flat, Pericoe	28 Nov 2011 - 22 Jan 2012			\$1,560	\$2,080	\$2,080	\$1,560		\$2,080	\$2,080	\$1,560											\$13,000
Summer crew	4 man crew with two 4WD tray vehicles	19 Dec 2011 - 18 Mar 2012						\$6,400	\$6,400	\$6,400	\$6,400	\$6,400	\$6,400	\$6,400	\$6,400	\$6,400	\$6,400	\$6,400	\$6,400	\$3,200			\$80,000
Total			\$6,900	\$8,650	\$11,010	\$11,530	\$11,530	\$10,410	\$0	\$10,730	\$3,680	\$1,560	\$0	\$0	\$0	\$0	\$0	\$0	\$0	\$0	\$0	\$0	\$156,000

Tables 2: Murray Valley region 2011/12 proposed fire prevention budget – Gannt chart

Work Requirements	Description	Implementation Period	15-20 Nov	21-27 Nov	28 Nov-4 Dec	5-11 Dec	12-18 Dec	19-25 Dec	26 Dec-1 Jan	2-8 Jan	9-15 Jan	16-22 Jan	23-29 Jan	30 Jan-5 Feb	6-12 Feb	13-19 Feb	20-26 Feb	27 Feb-4 Mar	5-11 Mar	12-18 Mar	19-25 Mar	26-31 Mar	TOTALS
Road m'tce stream crossings	Coppabella, Noonameena, Girraheen, Murrumbidgee, Belmolog	15 Nov 2011 - 8 Jan 2012	\$2,800	\$4,200	\$4,200	\$4,200	\$4,200	\$4,200		\$4,200													\$28,000
Firebreak m'tce - slashing & cultivation if req'd.	All Plantations where required	15 Nov 2011 - 22 Jan 2012	\$7,500	\$7,500	\$7,500	\$7,500	\$7,500	\$7,500	\$7,500	\$7,500	\$7,500	\$7,500											\$75,000
Flail machine	N/A																						\$0
Road m'tce track clearing of woody weeds	Ardsley, Eskett, Kimberley, Watercreek, Tatha, Fairfield, Smiths	28 Nov 2011 - 29 Jan 2012			\$600	\$1,600	\$1,600	\$1,200		\$1,300	\$1,300	\$1,300	\$1,100										\$10,000
Summer crew	4 man crew with two 4WD tray vehicles	19 Dec 2011 - 18 Mar 2012						\$6,400	\$6,400	\$6,400	\$6,400	\$6,400	\$6,400	\$6,400	\$6,400	\$6,400	\$6,400	\$6,400	\$6,400	\$3,200			\$80,000
Total			\$0	\$0	\$0	\$0	\$0	\$6,400	\$6,400	\$6,400	\$6,400	\$6,400	\$6,400	\$6,400	\$6,400	\$6,400	\$6,400	\$6,400	\$6,400	\$3,200	\$0	\$0	\$193,000

Tables 3: North Coast region 2011/12 proposed fire prevention budget – Gannt chart

Work Requirements	Description	Implementation Period	15-20 Nov	21-27 Nov	28 Nov-4 Dec	5-11 Dec	12-18 Dec	19-25 Dec	26 Dec-1 Jan	2-8 Jan	9-15 Jan	16-22 Jan	23-29 Jan	30 Jan-5 Feb	6-12 Feb	13-19 Feb	20-26 Feb	27 Feb-4 Mar	5-11 Mar	12-18 Mar	19-25 Mar	26-31 Mar	TOTALS
Road m'tce stream crossings	Quirran, Camira, Rocklea, Stormat, Wellingtonvale	16 Nov 2011 - 8 Jan 2012	\$960	\$960	\$1,120	\$1,120	\$1,120	\$1,120		\$800	\$800												\$8,000
Firebreak m'tce - slashing & cultivation	All Plantations where required	17 Nov 2011 - 22 Jan 2012	\$2,300	\$2,300	\$2,300	\$2,300	\$2,300	\$2,300	\$2,300	\$2,300	\$2,300	\$2,300											\$23,000
Flail machine																							\$0
Road m'tce track clearing of woody weeds																							\$0
Summer crew	TBC - Dependent on season																						\$0
Total			\$0	\$0	\$0	\$0	\$0	\$0	\$0	\$0	\$0	\$0	\$0	\$0	\$0	\$0	\$0	\$0	\$0	\$0	\$0	\$0	\$31,000

Tables 4: All regions 2011/12 proposed fire prevention budget – Gannt chart

Work Requirements	Description	Implementation Period	15-20 Nov	21-27 Nov	28 Nov-4 Dec	5-11 Dec	12-18 Dec	19-25 Dec	26 Dec-1 Jan	2-8 Jan	9-15 Jan	16-22 Jan	23-29 Jan	30 Jan-5 Feb	6-12 Feb	13-19 Feb	20-26 Feb	27 Feb-4 Mar	5-11 Mar	12-18 Mar	19-25 Mar	26-31 Mar	TOTALS
Road m'tce stream crossings		15 Nov 2011 - 16 Jan 2012	\$5,560	\$6,960	\$7,120	\$7,120	\$7,120	\$6,520		\$6,800	\$800												\$48,000
Firebreak m'tce - slashing & cultivation		15 Nov 2011 - 22 Jan 2012	\$13,300	\$15,050	\$15,050	\$15,050	\$15,050	\$15,050	\$9,800	\$15,050	\$9,800	\$9,800											\$133,000
Flail machine		15 Nov 2011 - 15 Jan 2012	\$1,600	\$1,600	\$2,400	\$2,400	\$2,400	\$2,400		\$1,600	\$1,600												\$16,000
Road m'tce track clearing of woody weeds		28 Nov 2011 - 22 Jan 2012			\$2,160	\$3,680	\$3,680	\$2,760		\$3,380	\$3,380	\$2,860	\$1,100										\$23,000
Summer crew		19 Dec 2011 - 18 Mar 2012						\$12,800	\$12,800	\$12,800	\$12,800	\$12,800	\$12,800	\$12,800	\$12,800	\$12,800	\$12,800	\$12,800	\$12,800	\$6,400			\$160,000
Total			\$20,460	\$23,610	\$26,730	\$28,250	\$28,250	\$39,530	\$22,600	\$39,630	\$28,380	\$25,460	\$13,900	\$12,800	\$12,800	\$12,800	\$12,800	\$12,800	\$12,800	\$6,400	\$0	\$0	\$380,000

Bombala Region 2011-12 Willmott Forests Fire Related Budget

Road Maintenance Budget & Fire Prevention Budgets

Total Budget **\$156,000**

Work Requirements	Description	Implementation Period	15-20 Nov	21-27 Nov	28 Nov-4 Dec
Road mt'ce stream crossings	Bendoc 2,4/Delegate1-4/Glengarry	15 Nov 2011 - 8 Jan 2012	\$1,800	\$1,800	\$1,800
Firebreak mt'ce - slashing & cultivation if req'd.	All Plantations where required	15 Nov 2011 - 8 Jan 2012	\$3,500	\$5,250	\$5,250
Flail machine	Bendoc 8&9, Delegate 8, (Numeralla, Kybeyan - TBA)	15 Nov 2011 - 15 Jan 2012	\$1,600	\$1,600	\$2,400
Road mt'ce track clearing of woody weeds	Ando, Bendoc1-4,Bombala 1, Craigie 1-4, Delegate 5-7, Paddys Flat, Pericoe	28 Nov 2011 - 22 Jan 2012			\$1,560
Summer crew	4 man crew with two 4WD tray vehicles	19 Dec 2011 - 18 Mar 2012			
Total			\$6,900	\$8,650	\$11,010

Note:

Road Maintenance largely includes environmental compliance repairing drainage crossings and some minor harvest road work to ensure operation can continue. A combination of slashing and mechanical earthworks is utilised depending on fuel loads, grazing and the influence of coastal summer rainfall. The Flail machine is utilised on those properties where the canopy is starting to impede tanker access. The likes of Kybeyan/Numeralla will be low priority unless the FDI is very high.

MV Region 2011-12 Willmott Forests Fire Related Budget

Road Maintenance Budget & Fire Prevention Budgets

Total Budget **\$193,000**

Work Requirements	Description	Implementation Period	15-20 Nov	21-27 Nov	28 Nov-4 Dec
Road mt'ce stream crossings	Coppabella, Noonameena, Girrahween, Murrumbung, Bellmolong	15 Nov 2011 - 8 Jan 2012	\$2,800	\$4,200	\$4,200
Firebreak mt'ce - slashing & cultivation if req'd.	All Plantations where required	15 Nov 2011 - 22 Jan 2012	\$7,500	\$7,500	\$7,500
Flail machine	N/A				
Road mt'ce track clearing of woody weeds	Ardsley, Eskett, Kimberley, Watercreek, Tatha, Fairfield ,Smiths	28 Nov 2011 - 29 Jan 2012			\$600

Summer crew	4 man crew with two 4WD tray vehicles	19 Dec 2011 - 18 Mar 2012			
Total			\$0	\$0	\$0

Note:

Road Maintenance works will be completed largely on crossings that were damaged in the Oct. 2010 floods. Works will largely only involve repairing so Most properties where required will have a mechanical eartbreak established (Given the late timing of works spraying has been ruled out). Program will be assessed and prioritised weekly as rainfall can be extremely unpredictable on the North Coast.

North Coast 2011/12 Willmott Forests Fire Related Budget

Road Maintenance Budget & Fire Prevention Budgets

Total Budget **\$31,000**

Work Requirements	Description	Implementation Period	15-20 Nov	21-27 Nov	28 Nov-4 Dec
Road mt'ce stream crossings	Culmarran, Camira, Rocklea, Stormat, Wellingtonvale	16 Nov 2011 - 8 Jan 2012	\$960	\$960	\$1,120
Firebreak mt'ce - slashing & cultivation	All Plantations where required	17 Nov 2011 - 22 Jan 2012	\$2,300	\$2,300	\$2,300
Flail machine					
Road mt'ce track clearing of woody weeds					
Summer crew	TBC - Dependent on season				
Total			\$0	\$0	\$0

Note:

Road Maintenance largley includes environmental compliance in respect to drainage.
Most properties where required will be slashed due to unstable soils.
Program will be assessed and prioritised weekly as rainfall can be extremely unpredictable on the North Coast.

TOTAL 2011=12 Willmott Forests Fire Related Budget

Road Maintenance Budget & Fire Prevention Budgets

Total Budget **\$380,000**

Work Requirements	Description	Implementation Period	15-20 Nov	21-27 Nov	28 Nov-4 Dec
Road mt'ce stream crossings		15 Nov 2011 - 16 Jan 2012	\$5,560	\$6,960	\$7,120

Firebreak mt'ce - slashing & cultivation		15 Nov 2011 - 22 Jan 2012	\$13,300	\$15,050	\$15,050
Flail machine		15 Nov 2011 - 15 Jan 2012	\$1,600	\$1,600	\$2,400
Road mt'ce track clearing of woody weeds		28 Nov 2011 - 22 Jan 2012			\$2,160
Summer crew		19 Dec 2011 - 18 Mar 2012			
Total			\$20,460	\$23,610	\$26,730

5-11 Dec	12-18 Dec	19-25 Dec	26 Dec-1 Jan	2-8 Jan	9-15 Jan	16-22 Jan	23-29 Jan	30 Jan-5 Feb	6-12 Feb	13-19 Feb	20-26 Feb	27 Feb-4 Mar
\$1,800	\$1,800	\$1,200		\$1,800								
\$5,250	\$5,250	\$5,250		\$5,250								
\$2,400	\$2,400	\$2,400		\$1,600	\$1,600							
\$2,080	\$2,080	\$1,560		\$2,080	\$2,080	\$1,560						
		\$6,400	\$6,400	\$6,400	\$6,400	\$6,400	\$6,400	\$6,400	\$6,400	\$6,400	\$6,400	\$6,400
\$11,530	\$11,530	\$10,410	\$0	\$10,730	\$3,680	\$1,560	\$0	\$0	\$0	\$0	\$0	\$0

continue .

5-11 Dec	12-18 Dec	19-25 Dec	26 Dec-1 Jan	2-8 Jan	9-15 Jan	16-22 Jan	23-29 Jan	30 Jan-5 Feb	6-12 Feb	13-19 Feb	20-26 Feb	27 Feb-4 Mar
\$4,200	\$4,200	\$4,200		\$4,200								
\$7,500	\$7,500	\$7,500	\$7,500	\$7,500	\$7,500	\$7,500						
\$1,600	\$1,600	\$1,200		\$1,300	\$1,300	\$1,300	\$1,100					

		\$6,400	\$6,400	\$6,400	\$6,400	\$6,400	\$6,400	\$6,400	\$6,400	\$6,400	\$6,400	\$6,400
\$0	\$0	\$6,400	\$6,400	\$6,400	\$6,400	\$6,400	\$6,400	\$6,400	\$6,400	\$6,400	\$6,400	\$6,400

as tanker access is achievable.

5-11 Dec	12-18 Dec	19-25 Dec	26 Dec-1 Jan	2-8 Jan	9-15 Jan	16-22 Jan	23-29 Jan	30 Jan-5 Feb	6-12 Feb	13-19 Feb	20-26 Feb	27 Feb-4 Mar
\$1,120	\$1,120	\$1,120		\$800	\$800							
\$2,300	\$2,300	\$2,300	\$2,300	\$2,300	\$2,300	\$2,300						
\$0	\$0	\$0	\$0	\$0	\$0	\$0	\$0	\$0	\$0	\$0	\$0	\$0

5-11 Dec	12-18 Dec	19-25 Dec	26 Dec-1 Jan	2-8 Jan	9-15 Jan	16-22 Jan	23-29 Jan	30 Jan-5 Feb	6-12 Feb	13-19 Feb	20-26 Feb	27 Feb-4 Mar
\$7,120	\$7,120	\$6,520		\$6,800	\$800							

\$15,050	\$15,050	\$15,050	\$9,800	\$15,050	\$9,800	\$9,800						
\$2,400	\$2,400	\$2,400		\$1,600	\$1,600							
\$3,680	\$3,680	\$2,760		\$3,380	\$3,380	\$2,860	\$1,100					
		\$12,800	\$12,800	\$12,800	\$12,800	\$12,800	\$12,800	\$12,800	\$12,800	\$12,800	\$12,800	\$12,800
\$28,250	\$28,250	\$39,530	\$22,600	\$39,630	\$28,380	\$25,460	\$13,900	\$12,800	\$12,800	\$12,800	\$12,800	\$12,800

5-11 Mar	12-18 Mar	19-25 Mar	26-31 Mar	Amount
				\$12,000
				\$35,000
				\$16,000
				\$13,000
\$6,400	\$3,200			\$80,000
\$0	\$0	\$0	\$0	\$156,000

	November	December	January	February	March	TOTAL
\$0	38%	48%	15%	0%	0%	100%
\$0	33%	53%	15%	0%	0%	100%
\$0	28%	53%	20%	0%	0%	100%
\$0	0%	56%	44%	0%	0%	100%
\$0	0%	16%	34%	34%	16%	100%

5-11 Mar	12-18 Mar	19-25 Mar	26-31 Mar	TOTALS
				\$28,000
				\$75,000
				\$0
				\$10,000

	November	December	January	February	March	TOTAL
\$0	33%	53%	15%	0%	0%	100%
\$0	25%	45%	30%	0%	0%	100%
\$0	0%	0%	0%	0%	0%	0%
\$0	0%	50%	50%	0%	0%	100%

\$6,400	\$3,200			\$80,000
\$6,400	\$3,200	\$0	\$0	\$193,000

\$0

0%

16%

34%

34%

16%

100%

5-11 Mar	12-18 Mar	19-25 Mar	26-31 Mar	TOTALS
				\$8,000
				\$23,000
				\$0
				\$0
				\$0
\$0	\$0	\$0	\$0	\$31,000

November

December

January

February

March

TOTAL

\$0

31%

49%

20%

0%

0%

100%

\$0

25%

45%

30%

0%

0%

100%

\$0

0%

0%

0%

0%

0%

0%

\$0

0%

0%

0%

0%

0%

0%

\$0

0%

0%

0%

0%

0%

0%

5-11 Mar	12-18 Mar	19-25 Mar	26-31 Mar	TOTALS
				\$48,000

November

December

January

February

March

TOTAL

\$0

0%

0%

0%

0%

0%

				\$133,000
				\$16,000
				\$23,000
\$12,800	\$6,400			\$160,000
\$12,800	\$6,400	\$0	\$0	\$380,000

\$0	40%	40%	20%	0%	0%	100%
\$0	30%	30%	40%	0%	0%	100%
\$0	0%	0%	0%	0%	0%	0%
\$0	0%	0%	0%	0%	0%	0%

15-20 Nov	21-27 Nov	28 Nov-4 Dec	5-11 Dec	12-18 Dec	19-25 Dec	26 Dec-1 Jan	2-8 Jan	9-15 Jan	16-22 Jan	23-29 Jan	30 Jan-5 Feb	6-12 Feb
15%	15%	15%	15%	15%	10%	0%	15%	0%	0%	0%	0%	0%
10%	15%	15%	15%	15%	15%	0%	15%					
10%	10%	15%	15%	15%	15%		10%	10%				
0%	0%	12%	16%	16%	12%	0%	16%	16%	12%			
0%	0%	0%	0%	0%	8%	8%	8%	8%	8%	8%	8%	8%

15-20 Nov	21-27 Nov	28 Nov-4 Dec	5-11 Dec	12-18 Dec	19-25 Dec	26 Dec-1 Jan	2-8 Jan	9-15 Jan	16-22 Jan	23-29 Jan	30 Jan-5 Feb	6-12 Feb
10%	15%	15%	15%	15%	15%	0%	15%					
10%	10%	10%	10%	10%	10%	10%	10%	10%	10%			
0%	0%	0%	0%	0%	0%	0%	0%	0%	0%	0%	0%	0%
0%	0%	6%	16%	16%	12%	0%	13%	13%	13%	11%		

[illegible]

13-19 Feb	20-26 Feb	27 Feb-4 Mar	5-11 Mar	12-18 Mar	19-25 Mar	26-31 Mar
0%	0%	0%	0%	0%		
8%	8%	8%	8%	4%		

100%
100%
100%
100%
100%

13-19 Feb	20-26 Feb	27 Feb-4 Mar	5-11 Mar	12-18 Mar	19-25 Mar	26-31 Mar
0%	0%	0%	0%	0%		

100%
100%
0%
100%

8%	8%	8%	8%	4%		

100%

13-19 Feb	20-26 Feb	27 Feb-4 Mar	5-11 Mar	12-18 Mar	19-25 Mar	26-31 Mar
0%	0%	0%	0%	0%	0%	0%
0%	0%	0%	0%	0%	0%	0%
0%	0%	0%	0%	0%	0%	0%

100%

100%

0%

0%

0%

--	--	--	--	--	--	--
