

IN THE FEDERAL COURT OF AUSTRALIA
VICTORIA DISTRICT REGISTRY

VID of 2011

IN THE MATTER OF WILLMOTT FORESTS LIMITED (RECEIVERS AND MANAGERS
APPOINTED) (LIQUIDATORS APPOINTED)
ACN 063 263 650

WILLMOTT FORESTS LIMITED (RECEIVERS AND MANAGERS APPOINTED)
(LIQUIDATORS APPOINTED)
ACN 063 263 650

IN ITS PERSONAL CAPACITY AND IN ITS CAPACITY AS RESPONSIBLE ENTITY OF
EACH OF THE MANAGED INVESTMENTS SCHEMES LISTED IN SCHEDULE 1 AND IN
ITS CAPACITY AS MANAGER OF THE UNREGISTERED MANAGED INVESTMENT
SCHEMES LISTED IN SCHEDULE 2
First Plaintiff

CRAIG DAVID CROSBIE
Second Plaintiff

IAN MENZIES CARSON
Third Plaintiff

CERTIFICATE IDENTIFYING EXHIBIT

This is the exhibit marked "CDC-29" now produced and shown to **Craig David Crosbie** at
the time of swearing his affidavit on 11 May 2011.

Before me: 

MEAGAN LOUISE GROSE
Arnold Bloch Leibler
Level 21, 333 Collins Street
Melbourne 3000
An Australian Legal Practitioner within the
meaning of the Legal Profession Act 2004

Filed on behalf of the Plaintiffs
ARNOLD BLOCH LEIBLER
Lawyers and Advisers
Level 21
333 Collins Street
Melbourne 3000

DX 38455 Melbourne
Tel: 9229 9999
Fax: 9229 9900
Ref: 01-1565015
(Leon Zwier)

2000 meters

643000

644000

645000

646000

647000

648000 meters

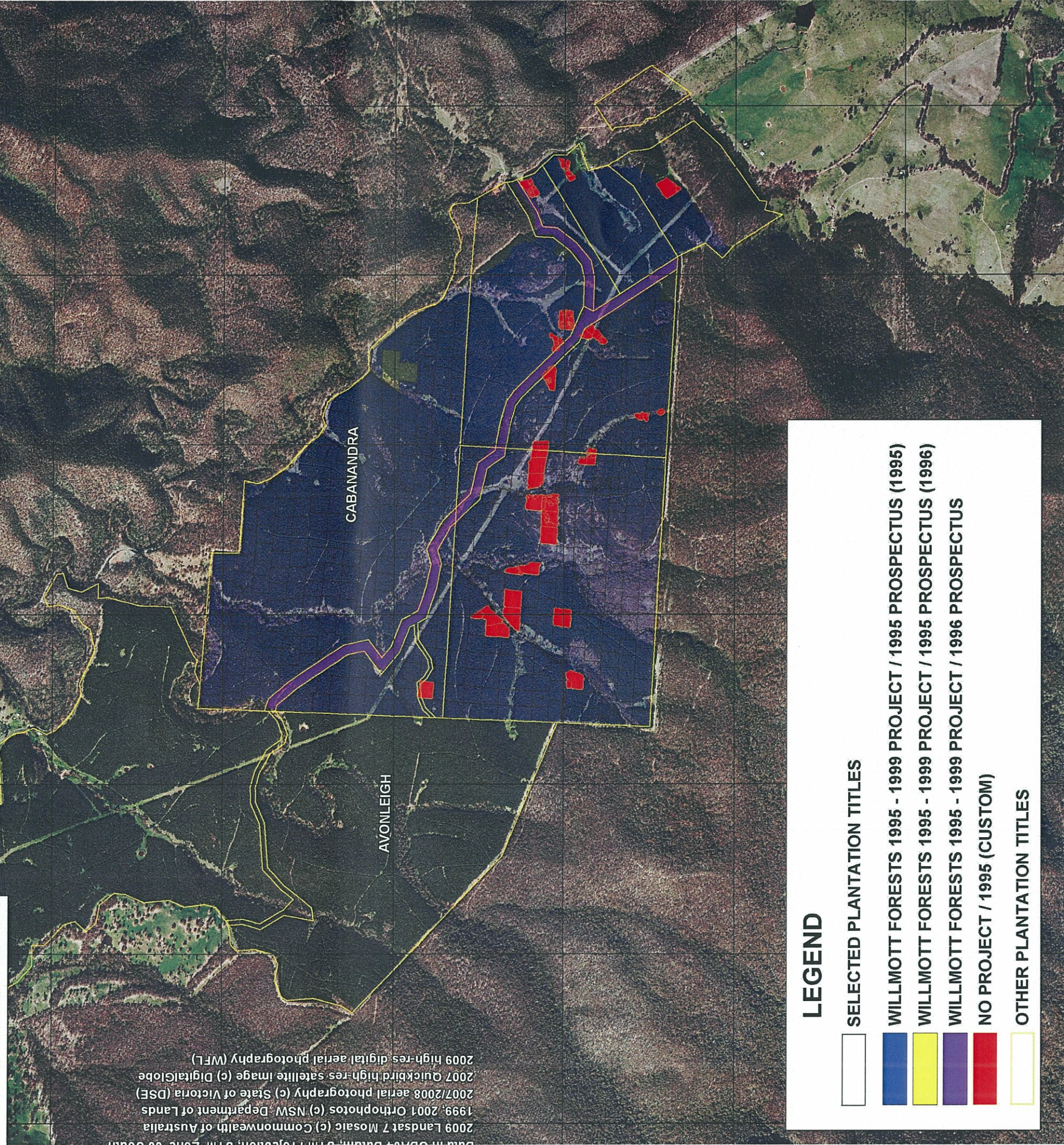
LOCATION PLAN



CABANANDRA PLANTATION

PLANTED 1996, 1997
BOMBALA REGION

2009 Landsat 7 Mosaic (c) Commonwealth of Australia
1999, 2001 Orthophotos (c) NSW Department of Lands
2007/2008 aerial photography (c) State of Victoria (DSE)
2007 Quickbird high-res satellite image (c) DigitalGlobe
2009 high-res digital aerial photography (WFL)



LEGEND

- SELECTED PLANTATION TITLES
- WILLMOTT FORESTS 1995 - 1999 PROJECT / 1995 PROSPECTUS (1995)
- WILLMOTT FORESTS 1995 - 1999 PROJECT / 1995 PROSPECTUS (1996)
- WILLMOTT FORESTS 1995 - 1999 PROJECT / 1996 PROSPECTUS
- NO PROJECT / 1995 (CUSTOM)
- OTHER PLANTATION TITLES

2000 meters

643000

644000

645000

646000

647000

648000 meters



5 kilometers



Plan Prepared 27 OCT 2010

Scale 1: 25 000

(when printed at A3 size)

Willmott Forests